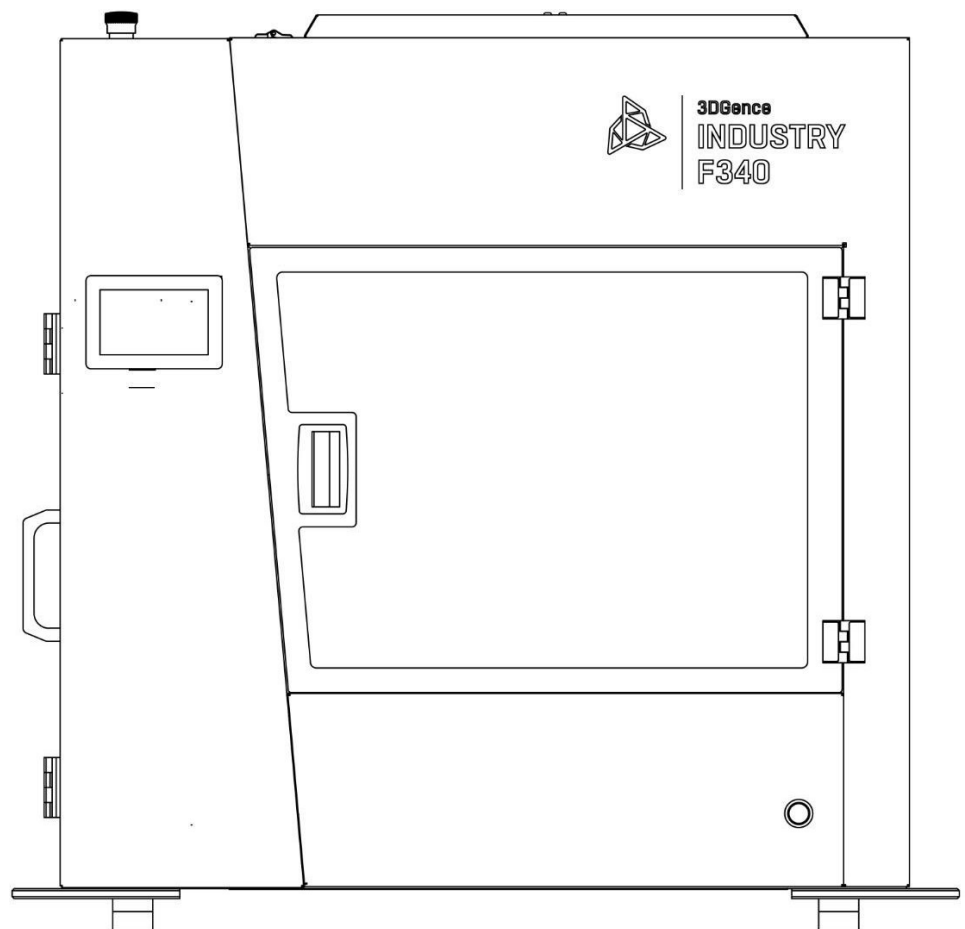


Manual:

PRINTER'S FIRMWARE UPDATE

3DGence INDUSTRY F340

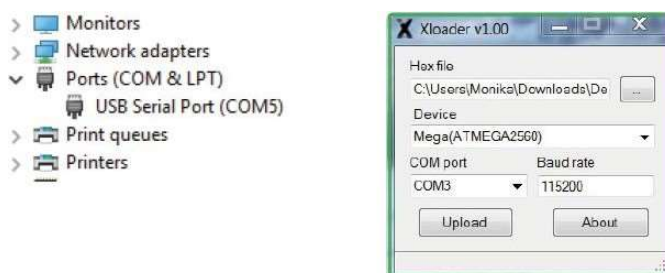


To update the printer's firmware it is necessary:

- the file with the current firmware in *.hex file,
- the Xloader,
- files programming and updating the module's memory,
- driver CDM21228_Setup (driver installation if needed).

WARNING! All modules must be programmed and updated in accordance with the points described below before updating the printer's firmware.

1. Depending on the modules you have - save one of the files to the SD card:
 - **for module PRO:** EE_Head_Update_PRO
 - **for module HT:** EE_Head_Update_HT
 - **for module HTmax:** EE_Head_Update_HTMAX
 - **for module HF:** EE_Head_Update_HF
2. Install the appropriate module in the printer.
3. Insert the SD card into the printer with the previously saved file for the appropriate module
4. Enter the PRINT menu, select the saved file for the mounted module and press PRINT to update the module's memory. After the update is completed, the file will be deleted.
5. Replace the module with the next one, save the appropriate file to the SD card and run it in the printer with PRINT button.
6. If all modules have been updated, connect the USB cable to the USB B port in the printer.
7. Connect the USB cable to the USB port in the computer.
8. Switch the printer on.
9. Wait for the device installer to finish working if it was automatically started.
10. In the Xloader in the „Hex file” field select the latest downloaded firmware file.
11. In „Device” field select option Mega (ATMEGA2560).
12. In „COM port” field select the COM port which your printer is currently assigned to.
COM port can be checked by entering in: **Windows Control Panel -> System and Security -> System -> Device Manager -> Ports (COM and LPT) -> USB Serial Port (COM...)**. The rest of the information should remain unchanged.
13. Confirm the update by the Upload button. Uploading new firmware can take several minutes. During the upload, a coloured noise may appear on the printer display but this is completely normal. The success of the update will be confirmed by an appropriate prompt on the computer „...bytes uploaded”.



WARNING! During the update, do not perform any actions on the panel. Do not disconnect the printer from USB and power port because this may cause failure of update.

14. Disconnect the USB cable from the printer.
15. Turn off the printer and restart.
16. Do the heatbed calibration procedure by selecting from the printer menu in sequence: Menu → Calibration → Heatbed scan.
17. If, after restarting the printer, the screen shows the required additional activities, they should be done according to the information on the screen