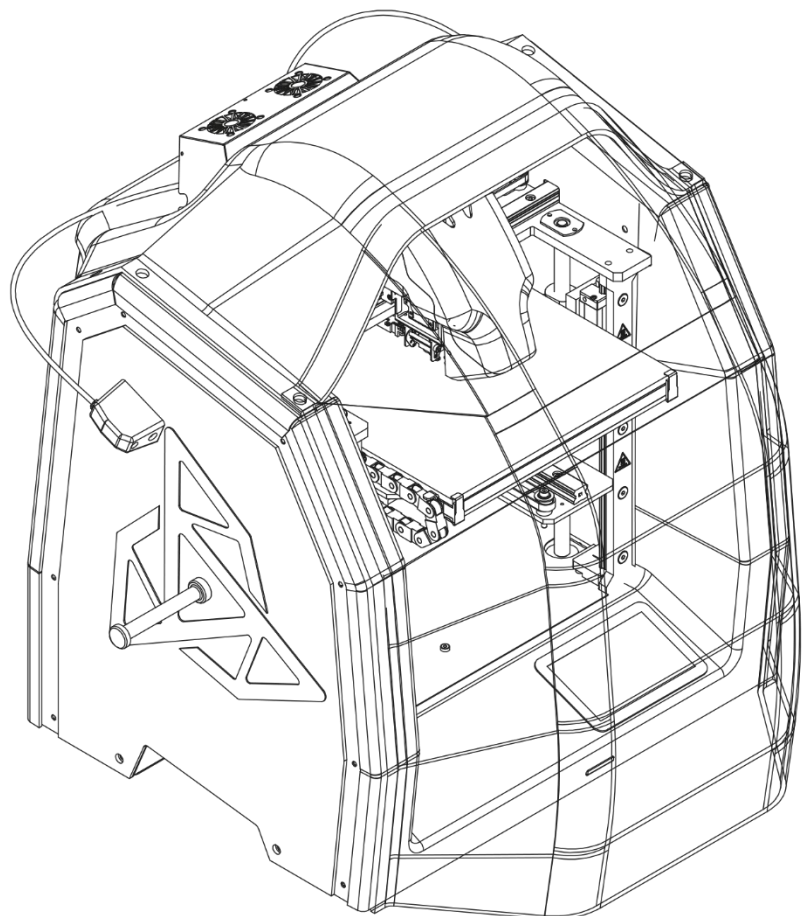


Manual:

PRINTER'S FIRMWARE UPDATE

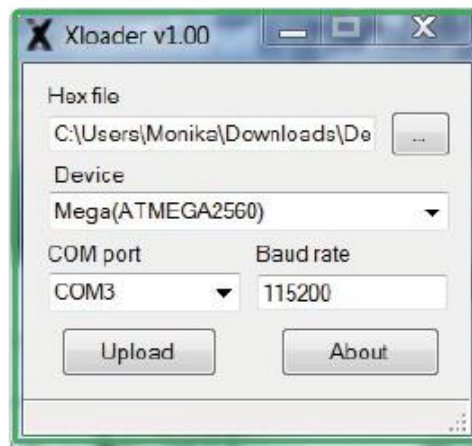
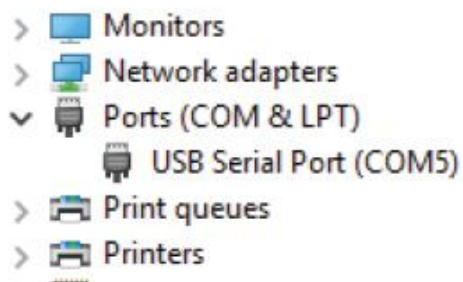
3DGence DOUBLE P255



To update the printer's firmware it is necessary:

- The file with the current firmware in *.hex file,
- the Xloader.

1. Switch the printer on.
2. If the material is loaded, unload it using the *"Unload model material / Unload support material"* option (material unloading) - the procedure is described in User's manual (chapter III, point 4.2).
3. Connect the USB cable to the USB B port on the printer.
4. Connect the USB cable to USB port on the computer.
5. Wait for the device installer to finish working if it was automatically started.
6. In the Xloader in the **„Hex file“** field select the latest downloaded firmware file.
7. In **„Device“** field select option Mega(ATMEGA2560).
8. In **„COM port“** field select the COM port which your printer is currently assigned to.
COM port can be checked by entering in: **Windows Control Panel -> System and Security -> System -> Device Manager -> Ports (COM & LPT) -> USB Serial Port (COM...)**. The rest of the information should remain unchanged.
9. Confirm the update by the Upload button. Uploading new firmware can take several minutes. During the upload, a colored noise may appear on the printer display but this is completely normal. The success of the update will be confirmed by an appropriate prompt on the computer **„...bytes uploaded“**.



WARNING! During the update, do not perform any actions on the panel. Do not disconnect the printer from USB and power port because this may cause failure of update.

10. Disconnect the USB cable from the printer and restart the printer.